

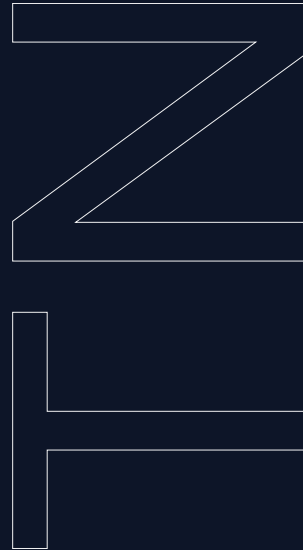
# 600

## AIRPARK COMMERCE DR

### CLASS A INDUSTRIAL PARK

68,040 - 317,520 SF AVAILABLE

76.53 TOTAL ACRES

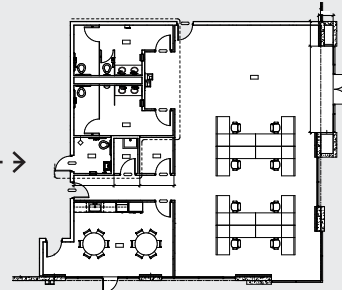
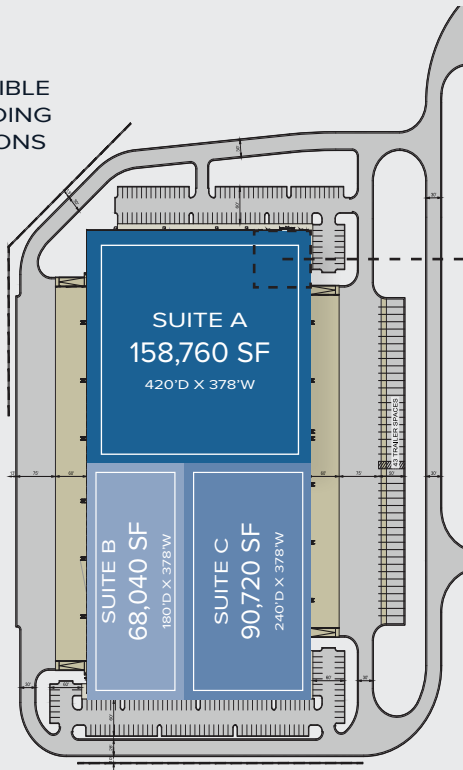


**Dalfen**  
INDUSTRIAL

**CBRE**

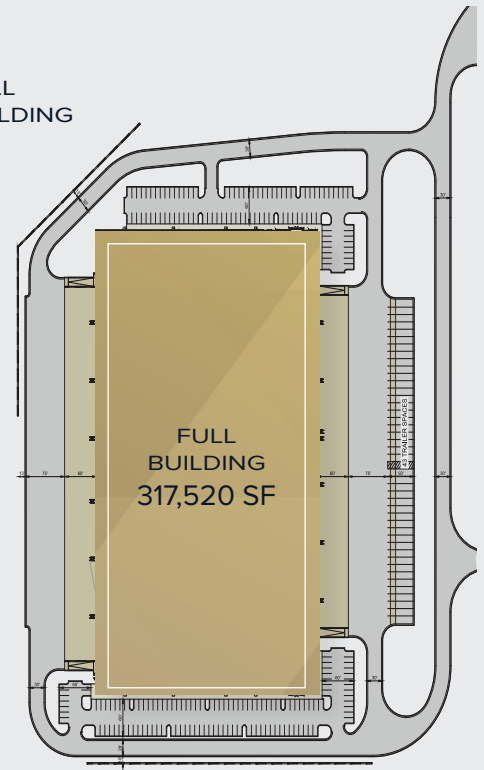
## BUILDING THREE 68,040 SF - 317,520 SF

DIVISIBLE  
BUILDING  
OPTIONS



SPEC OFFICE  
2,788 SF

FULL  
BUILDING



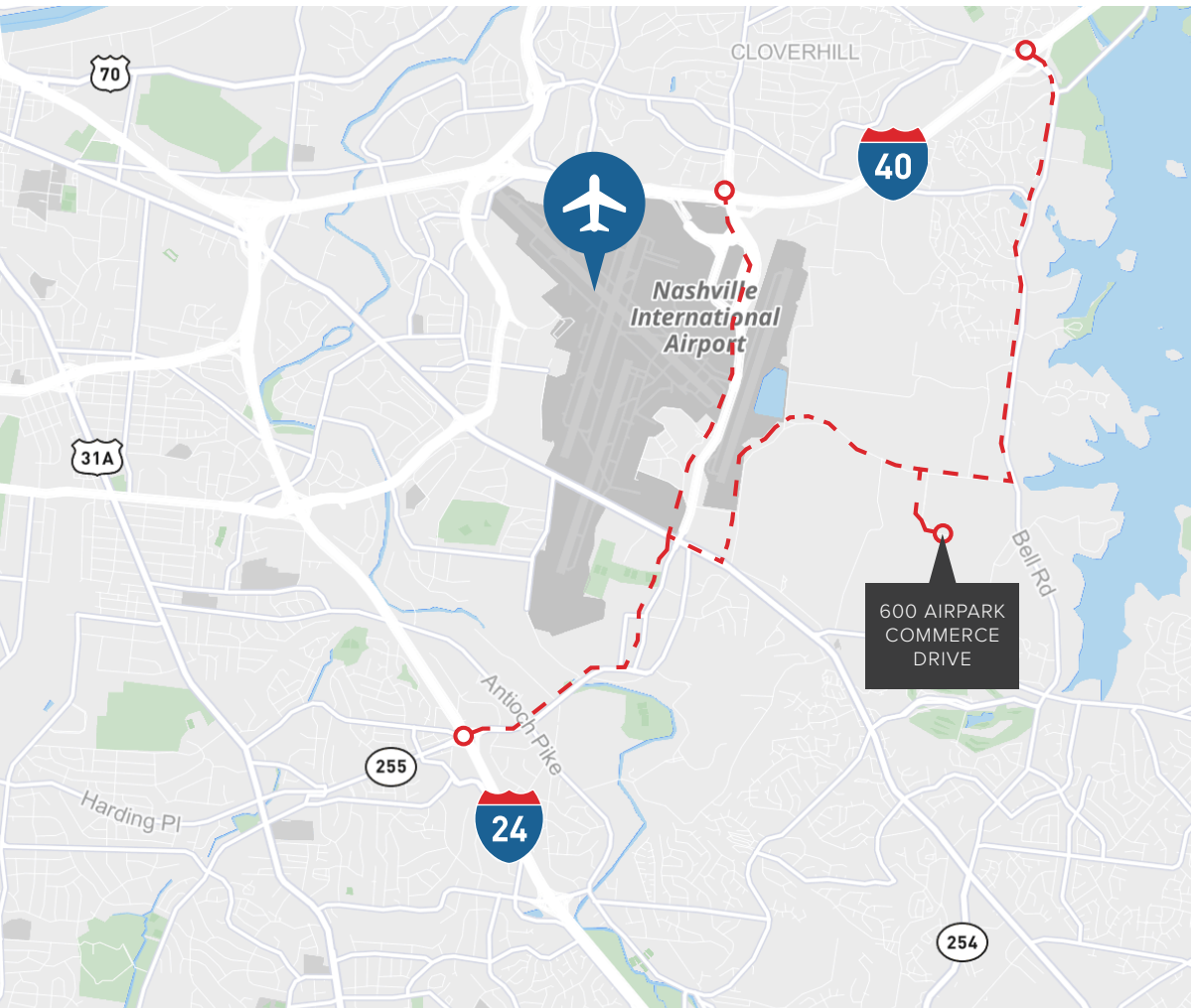
FULL  
BUILDING  
317,520 SF

BUILDING	AVAILABLE SF	SPECIFICATIONS
<b>Suite A</b>	158,760 SF	Cross-Dock / Loading: 23 docks / 2 Drive In / Dimensions: 420'D x 378'W
<b>Suite B</b>	68,040 SF	Front Load / Loading: 21 Docks / 1 Drive In / Dimensions: 180'D x 378'W
<b>Suite C</b>	90,720 SF	Front Load / Loading: 17 Docks / 1 Drive In / Dimensions: 240'D x 378'W

BUILDING THREE DETAILS	
<b>Building Dimensions</b>	420' x 756'
<b>Clear Height</b>	36' Minimum Clear Height
<b>Spec Office</b>	2,788 SF
<b>Column Spacing</b>	50' Deep x 54' Wide Typical. 60'Deep Spacing in Staging Bays
<b>Truck Court</b>	185' Deep
<b>Lighting</b>	LED Warehouse Fixtures With OC Sensors
<b>Electric</b>	3,000-AMP Service
<b>Roof</b>	60 MIL White TPO
<b>Fire Protection</b>	ESFR
<b>Floor</b>	7" Unreinforced Concrete 4,000 PSI Concrete Slab Bearing on 6" GAB
<b>Parking</b>	218 Car Parks
<b>Trailer Parking</b>	43 Trailer Spaces at East Truck Court

**ACCESS**



**1.8 MILES**  
to Nashville BNA



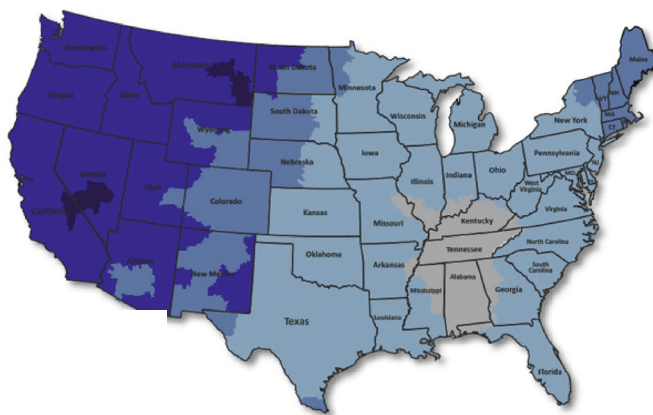
**4.6 MILES**  
to Interstate 40



**4.9 MILES**  
to Interstate 24

**600 AIRPARK  
COMMERCE  
DRIVE**

**FEDEX GROUND PARCEL DELIVERY MAP**



- 1 - Day
- 2 - Days
- 3 - Days
- 4 - Days
- 5 - Days



50% of the United States population is located within 650 miles from Nashville/Davidson County



75% of the United States market is within a 2-hour flight



12 million people live within a 2.5-hour drive



Three major interstates converge in Nashville



72% of the United States population is reached with 2-day ground delivery

**NEARBY CARRIERS**



**6.3 MILES**  
to FedEx Air & Ground



**7.1 MILES**  
to UPS Air & Ground

# 600

## AIRPARK COMMERCE DR



600 Airpark Commerce Dr. / Nashville, TN 37217

### FOR LEASING INFORMATION

#### STEVE PRESTON

Executive Vice President  
+1 615 248 1114  
steve.preston@cbre.com

#### JACK ARMSTRONG

Senior Vice President  
+1 615 493 9257  
jack.armstrong@cbre.com



© 2024 CBRE, Inc. All rights reserved. This information has been obtained from sources believed reliable but has not been verified for accuracy or completeness. CBRE, Inc. makes no guarantee, representation or warranty and accepts no responsibility or liability as to the accuracy, completeness, or reliability of the information contained herein. You should conduct a careful, independent investigation of the property and verify all information. Any reliance on this information is solely at your own risk. CBRE and the CBRE logo are service marks of CBRE, Inc. All other marks displayed on this document are the property of their respective owners, and the use of such marks does not imply any affiliation with or endorsement of CBRE. Photos herein are the property of their respective owners. Use of these images without the express written consent of the owner is prohibited.

