



EAST DALLAS LOGISTICS
CENTER

1460 E KEARNEY ST, MESQUITE, TX 75149

138,402
SQUARE FEET AVAILABLE



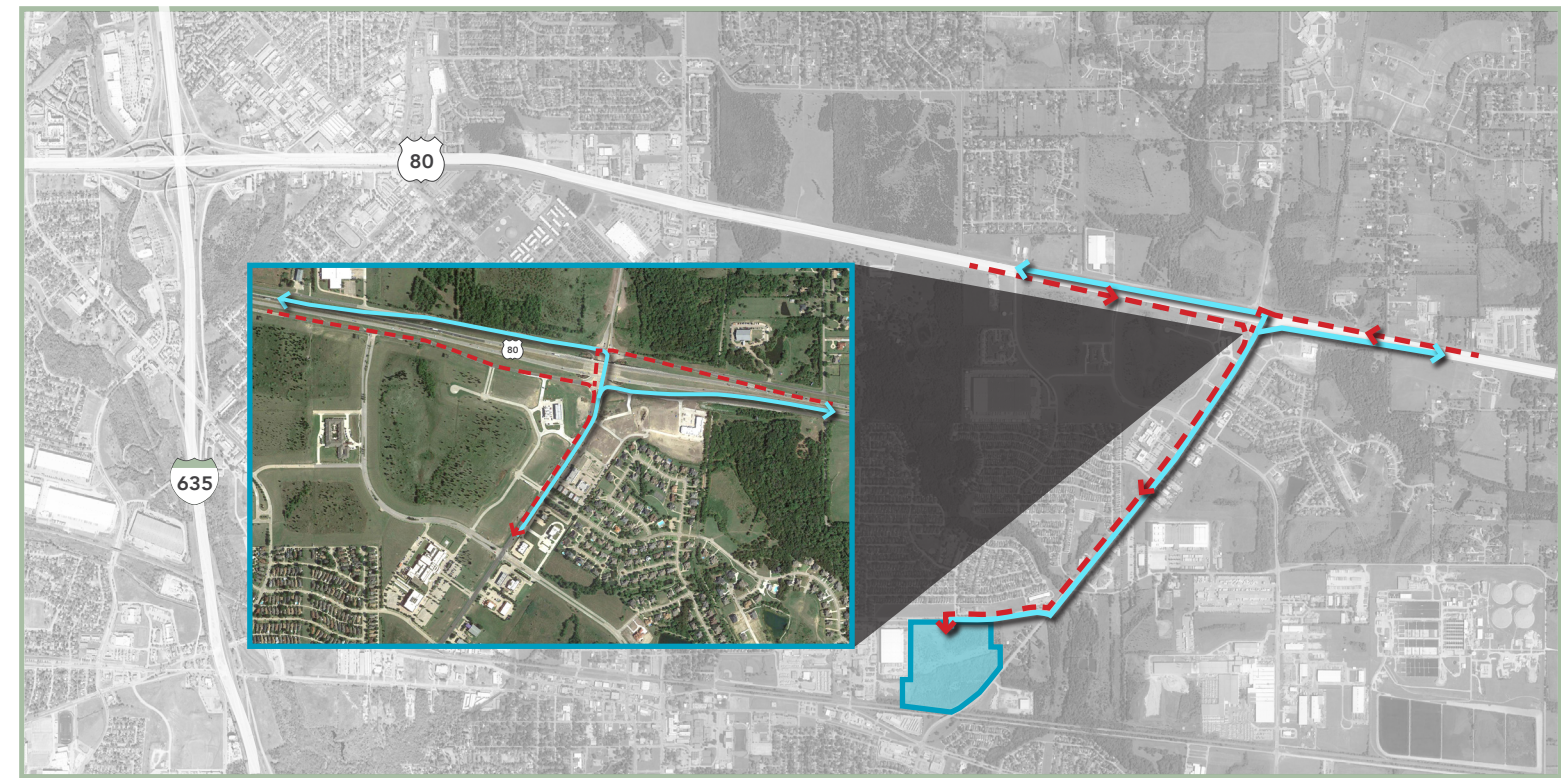
MATT DORNAK, SIOR
214-267-0461
mdornak@streamrealty.com

RYAN WOLCOTT, SIOR
214-267-0412
rwolcott@streamrealty.com



1460 E Kearney Street

- Building Size: 138,402 SF
- Office: 3,935 Sf
- Clear Height: 32'
- Loading Configuration: Front Load
- Dock Doors: 21 (9' x 10')
- 10 Levelers w/Shelters
- 11 Edge of Docks
- Drive-In Doors: 2 (14' x 16')
- Building Depth: 260'
- Column Spacing: 50' D x 52' L
- Staging Bay: 60' D x 52' L
- Truck Court Depth: 185'
- Trailer Parks: 49
- Car Parks: 172 (Expandable by 114)
- Sprinkler System: ESFR
- Fenced Truck Court & Trailer Yard





LOCATION HIGHLIGHTS

- A two building, 545,547 SF master planned industrial park
- Dedicated personnel/trailer traffic flow
- Site is securable
- Ability to meet heavy parking requirements
- Located in Dallas County
- Incentives available through the City and County
- Triple Freeport tax abatement
- Access to dense labor/population base
- Proximity to Mesquite Metro Airport

